

Whiz Bang

Models #2003, 2003BN, 2003ST, 2005, 2005BN, 2005ST

Instruction Manual



 **GOLD MEDAL**®
FUNFOOD EQUIPMENT AND SUPPLIES

Cincinnati, OH 45241-4807 USA

Table of Contents

Safety Precautions	3
Installation Instructions	4
Operating Instructions	5-6
Cleaning Instructions	7
Maintenance Instructions	8
Troubleshooting	9
Ordering Spare Parts	10
System Parts Location Section	11-17
Cabinet Breakdown & Door Hardware	11-12
Cabinet Interior–Ceiling	12-13
Bottom Corn Pan Assembly	13
Kettle Shell Components	14
Lid and Agitator Assembly	15
Unimaxx 12/14 oz Kettle Specification	16
Motor Plate Assembly	17
Electrical Schematic	18-19
Warranty	20

SAFETY PRECAUTIONS



⚠ DANGER

Machine **MUST** be properly grounded to prevent electrical shock to personnel. Failure to do so could result in serious injury, or death. Do **NOT** immerse the kettle, warmer, or any other part of this equipment in water. Always unplug the equipment before cleaning or servicing. Do not use excessive water when cleaning.



⚠ WARNING

To avoid serious burns, do **NOT** touch the kettle while it is hot.



⚠ WARNING

ALWAYS wear safety glasses when servicing this equipment.



⚠ WARNING

Any alterations to this equipment will void the warranty and may cause a dangerous situation. **NEVER** make alterations to the equipment. Make sure all machine switches are in the off position before plugging the equipment into the receptacle.



⚠ CAUTION

Do **NOT** allow direct contact with this equipment and the general public when used in food service locations. Only personnel that are trained and familiar with the equipment should operate the equipment. Carefully read all installation instructions before operation.



⚠ CAUTION

This machine is **NOT** to be operated by minors. Minors are classified as anyone under the age of 18.

NOTE

The information, specifications and illustrations contained in this manual represent the latest data available at time of publication. Right is reserved to make changes as required at the discretion of Gold Medal Products Company without notice.

INSTALLATION INSTRUCTIONS


Note: Make sure to have all employees read the instruction manual thoroughly before operating this machine.

Checking Shipment

Unpack all cartons and check thoroughly for any damage that may have occurred during transit. Damage claims should be filed immediately with the transportation company. Gold Medal is not responsible for damage that occurs in transit.

Electrical Requirements:

The following power supply must be provided:
Model No. 2003, 2003BN, 2003ST, 2005, 2005BN: 120 VAC, 60 Hz.

	⚠ DANGER
	Machine must be properly grounded to prevent shock in case of electrical problems. Wall receptacle must be wired as shown on the receptacle. Failure to wire properly will void the warranty and can result in damage to motors, elements, relay, lights, etc.

All 2003 models consume a maximum of 1610 Watts, All 2005 models consume a maximum of 1710 Watts.

Your electrician must furnish sufficient current for proper machine operation. It is Gold Medal Products Company's recommendation that this machine be connected to a fused circuit by itself. Failure to wire properly will void the warranty and can result in damage to the heat elements, light, motor and etc.

It is Gold Medal Products Company's recommendation that this machine be plugged directly into a wall outlet. The use of extension cords is not recommended due to safety reasons and the popper's performance will be sacrificed/reduced.

FINAL PREPARATIONS

The popcorn machine was adjusted, inspected, and tested before it left the factory. After removing machine from shipping box, remove all tape and packing material in or on the machine before beginning operation.

⚠ WARNING

To avoid serious burns, do NOT touch the kettle while it is hot!

OPERATING INSTRUCTIONS

Controls and their functions

LIGHT SWITCH

Turns on all of the lights, interior, and dome on your popcorn machine.

WARMER Switch

Operates the elements for the heated corn pan.

KETTLE HEAT SWITCH

Operates the heating elements in the popping kettle.

KETTLE MOTOR SWITCH

Operates the kettle agitator motor.



Light Switch

Warmer Switch

Kettle Motor Switch

Kettle Heat Switch

POPPING CORN

AMOUNT OF POPCORN AND OIL

Your new popper is equipped with a corn, salt, and oil measure. We recommend flavored and colored coconut oil. Popcorn popped in coconut oil stays fresh longer and does not leave black deposits in your kettle like other oils. Use only top quality fresh hybrid popcorn from reputable suppliers.

Corn charge – 12 oz./14 oz.

Oil charge – 3.5 oz./4.2 oz.

Flavacol – 14.7 cc (measure included with accessory kit)

*for best results use mega-pop premeasured pouches (item # 2839)

POPPING INSTRUCTIONS

1. Turn KETTLE HEAT and KETTLE MOTOR switch ON.
2. Make test pop with 3 kernels of corn and 1 oz. (30 ml) of oil.
3. Load pre-measured popcorn and oil pouch into kettle, or add ingredients in amounts specified above.
4. When corn has popped, dump kettle.
5. Repeat cycle starting with Item #3; always pop 3-5 batches for best popcorn.

When you are finished popping, make sure “KETTLE HEAT” and “KETTLE MOTOR” switches are turned “OFF”.

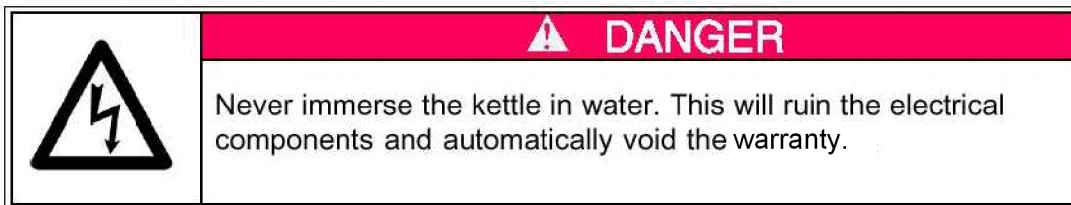
NEVER LEAVE THE KETTLE HEAT ON WHEN YOU ARE NOT POPPING CORN.

CLEANING INSTRUCTIONS

DAILY:

Clean the Kettle


1. As you pop corn, wipe the kettle with a clean cloth. It is easy to keep the outside clean when the kettle is warm and the oil is not baked on. **CAUTION:** The hot kettle will cause burns if you touch it with your hand. Allow the kettle to cool for at least 1 hour before attempting to clean.
2. Every night, add 10 – 12 oz. of Heat'n Kleen solution (mix 2 tablespoons Heat'n Kleen per gallon of water). Turn on the kettle heat. When the water starts to boil, turn off the heat and let it work overnight.
3. The next morning, dump the solution into a bucket and wipe the inside of the kettle with a cloth.




Clean the Popcorn Machine

1. Wipe the stainless steel parts with a clean cloth and cleaner designed for stainless steel. **Do not use oven cleaners, as they will damage parts of the machine.**
2. Ammonia cleaners will damage the plastic doors. **Use only non-ammonia cleaners, such as Gold Medal's – Watchdog Glass Cleaner – item number 2588.**

MAINTENANCE INSTRUCTIONS

	⚠ DANGER
	Improper installation, adjustment, alteration, service or maintenance can cause property damage, injury, or death. Read the Installation, Operating, and Maintenance Instructions thoroughly. Installation should be performed by a certified electrician.

	⚠ WARNING
	Adequate eye protection must be used when servicing this equipment to prevent the possibility of injury.

	⚠ CAUTION
	THE FOLLOWING SECTIONS OF THIS MANUAL ARE INTENDED ONLY FOR QUALIFIED SERVICE PERSONNEL WHO ARE FAMILIAR WITH ELECTRICAL EQUIPMENT. THESE ARE NOT INTENDED FOR THE OPERATOR.

TROUBLESHOOTING

Below are some common issues you may encounter, along with basic trouble shooting steps to resolve them.

EXPERIENCING LONG POPPING CYCLES

If your pop cycle is longer than 4 minutes, it can be the result of several things:

- A. **LOW VOLTAGE** - If the machine is operated on low voltage, this could cause the kettle not to reach the proper operating temperature. Voltage must be at least 110v.
- B. **INADEQUATE SUPPLY LINES** - Inadequately sized electrical supply lines, in addition to being a fire hazard, would also prevent the kettle from reaching the proper operating temperature. Check with a qualified electrician.
- C. **INFERIOR CORN** - Inferior quality corn would result in longer popping cycles. Use only top quality fresh hybrid popcorn from reputable suppliers. Even then, if you let your corn pick up moisture or dry out, your popping cycles will be slow.

THE KETTLE DOES NOT HEAT

Before you go any further, make sure the kettle lead-in cord is plugged in-

- A. **KETTLE HEAT SWITCH** - Check the voltage to and from the "KETTLE HEAT" switch, and if the switch is defective, replace it. (Repair should only be performed by qualified service personnel.)

THE MOTOR WILL NOT TURN AGITATOR

WARNING! If the kettle agitator shaft is not rotating, **DO NOT** pop corn. Adjust the clearance between the kettle bottom and the stir blade to 1/32" (use a dime). Loosen the set screw in the collars above and below the crossbar and adjust the agitator shaft as necessary. Then re-tighten the set screws in the collars.

ORDERING SPARE PARTS

1. Identify the needed part by checking it against the photos, illustrations, and/or the parts list.
2. When ordering, please include part number, part name, and quantity needed.
3. Please include the machine's model name, serial number, and date of manufacture (located on the machine nameplate) with your order.
4. Address all parts orders to:

Parts Department
Gold Medal Products Co.
10700 Medallion Drive
Cincinnati, Ohio 45241-4807

or, place orders at:

(800) 543-0862

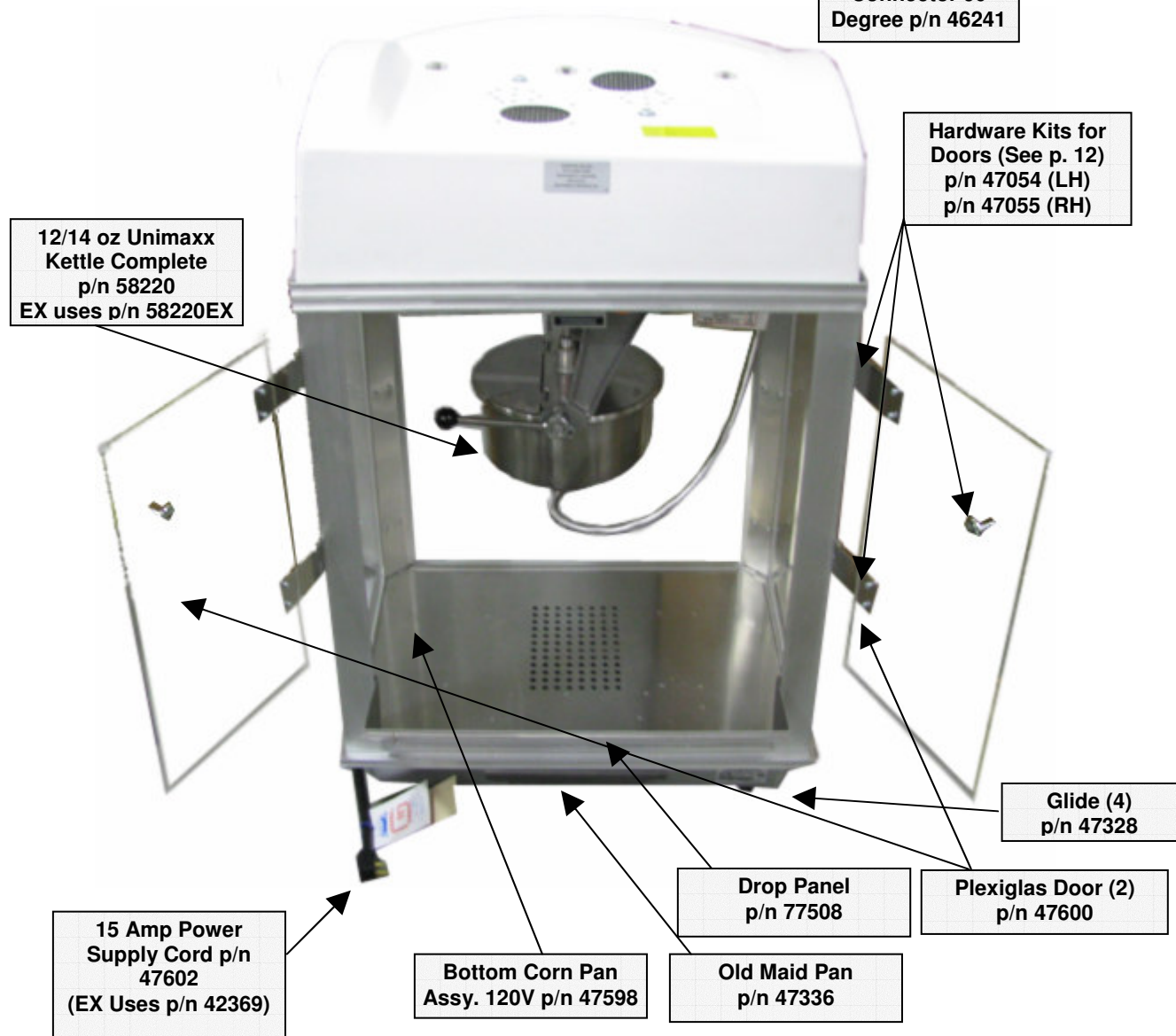
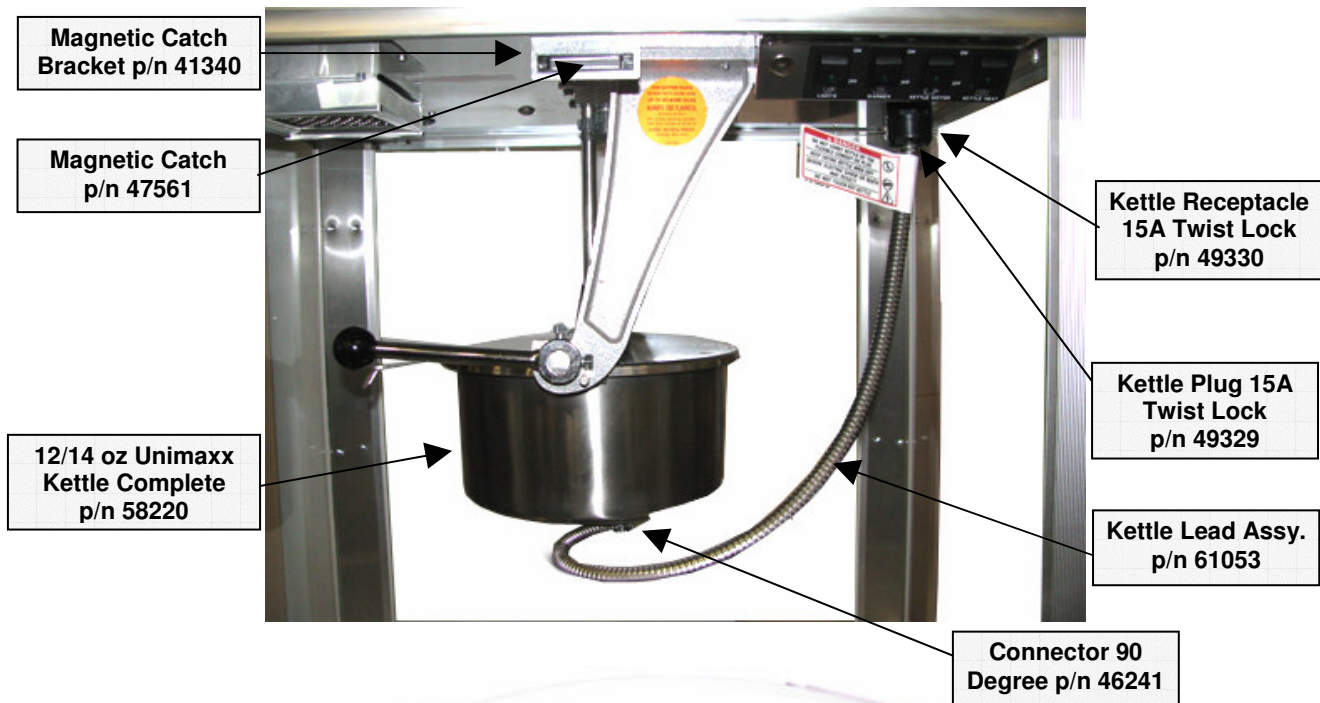
(513) 769-7676

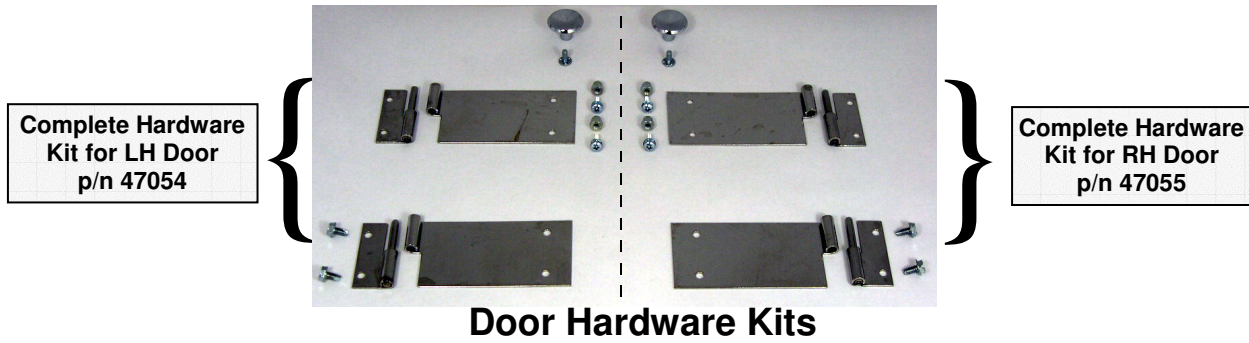
Fax: (513) 769-8500

E-mail: info@gmpopcorn.com

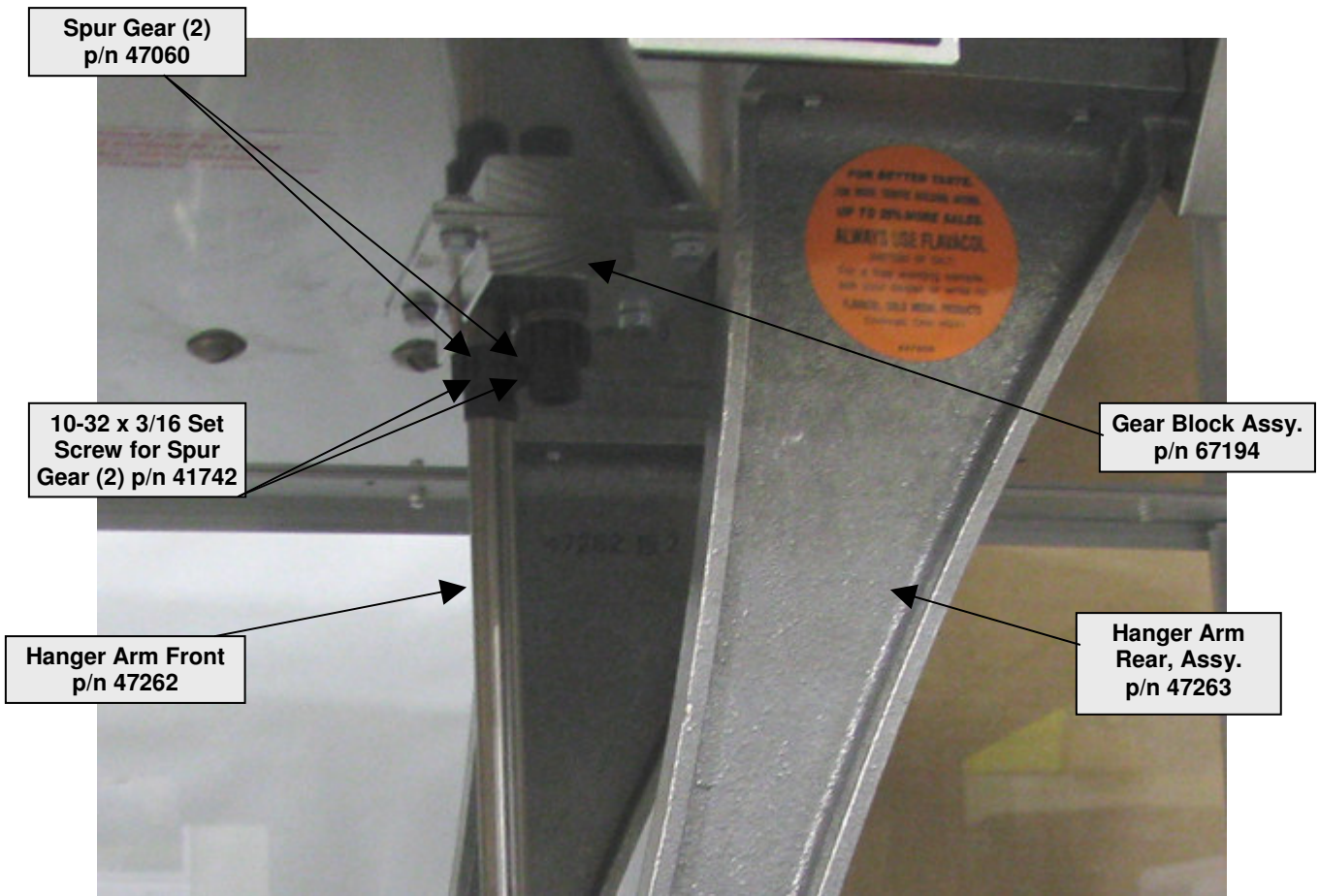
Web Page: www.gmpopcorn.com

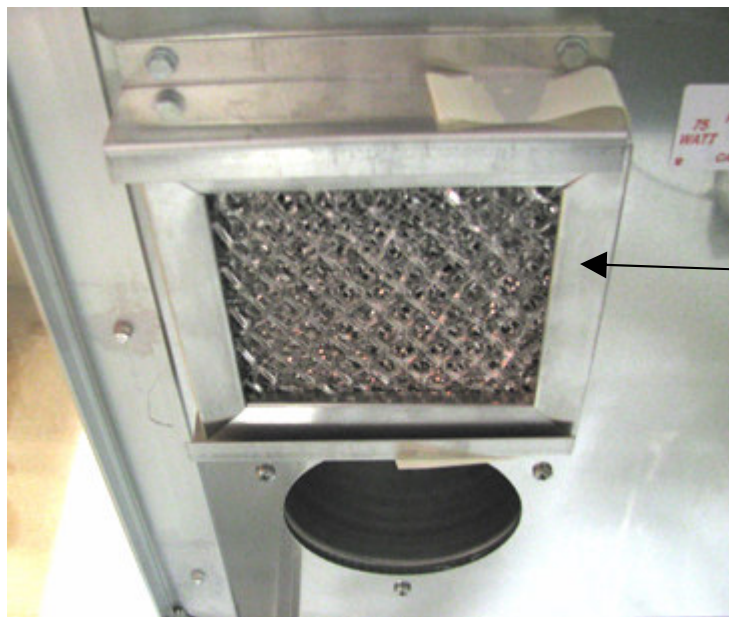
Cabinet Breakdown





Cabinet Interior – Ceiling Components

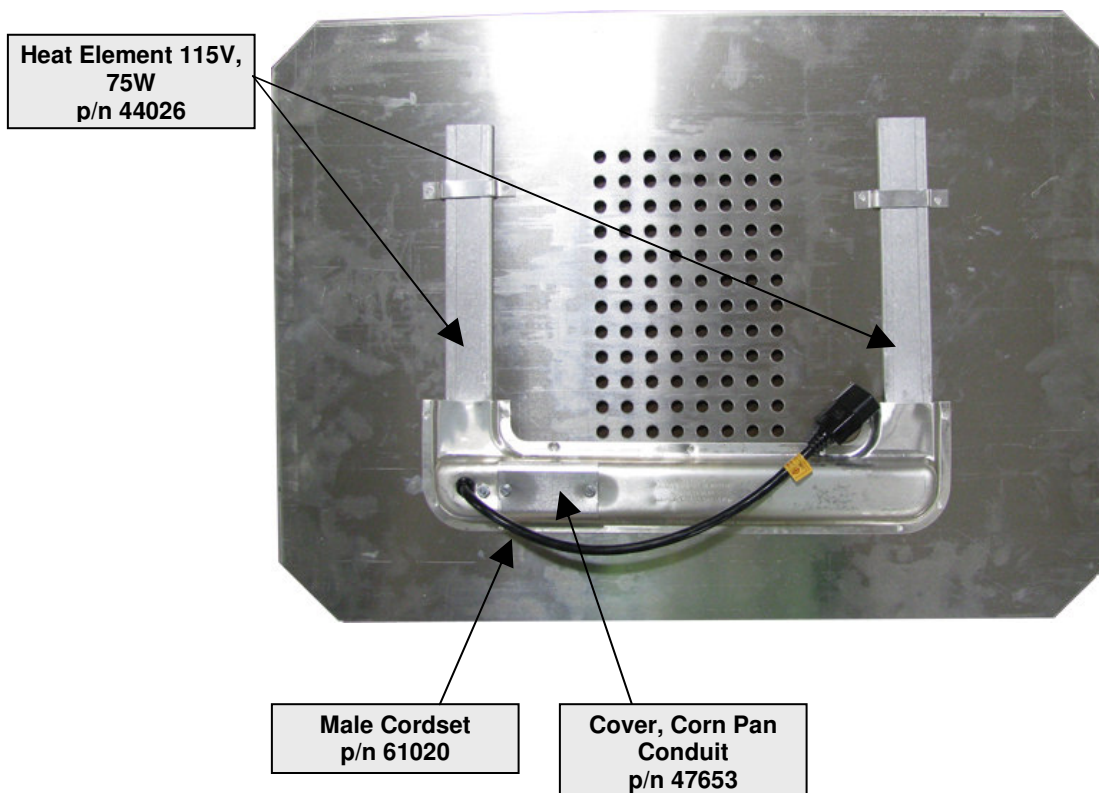




Filter
p/n 47043

Bottom Corn Pan Assembly – Part Number 47598

Complete Bottom Corn Pan Assembly For 2003 Models: Everything Shown Below, Including Female Cordset p/n 61020.



Heat Element 115V,
75W
p/n 44026

Male Cordset
p/n 61020

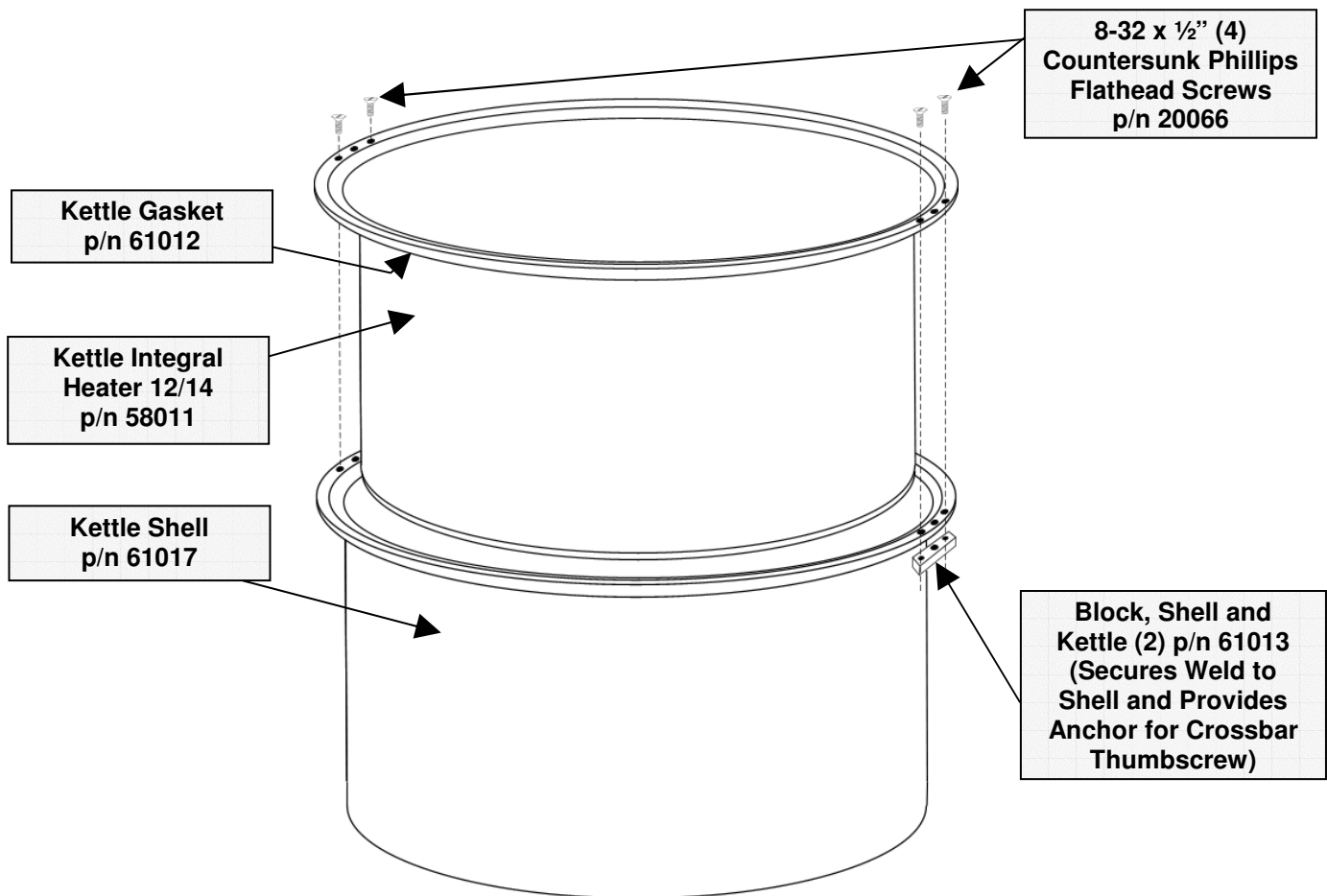
Cover, Corn Pan
Conduit
p/n 47653

Heater Blower Components For 2005 And 2005BN

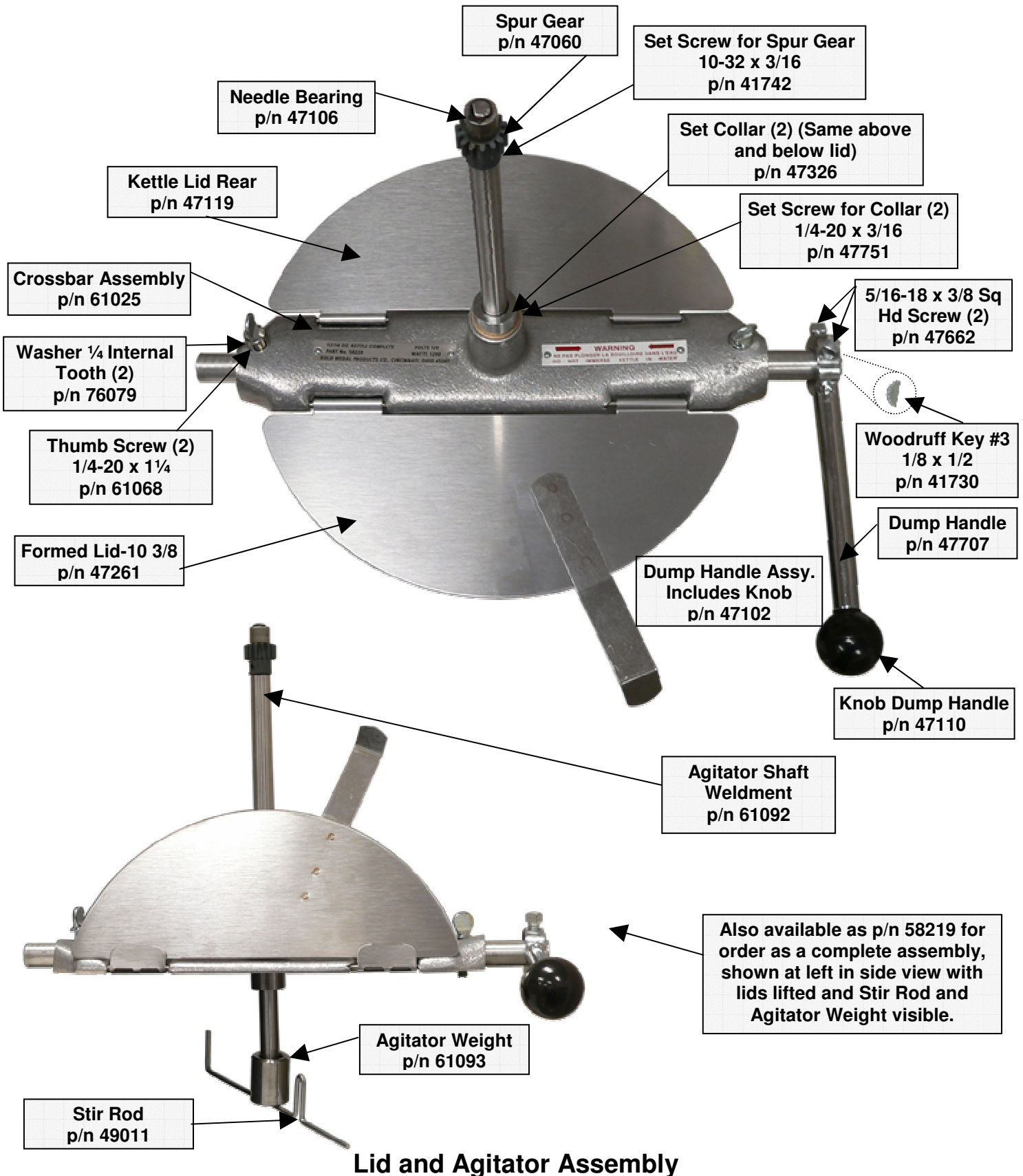
Heat Element 250W Tubular	P/N 61184
Thermostat	P/N 47385
Warmer Fan	P/N 48018
Blower Plug And Cord	P/N 47199

(Above Items Not Shown In Illustration)

Kettle Shell Components

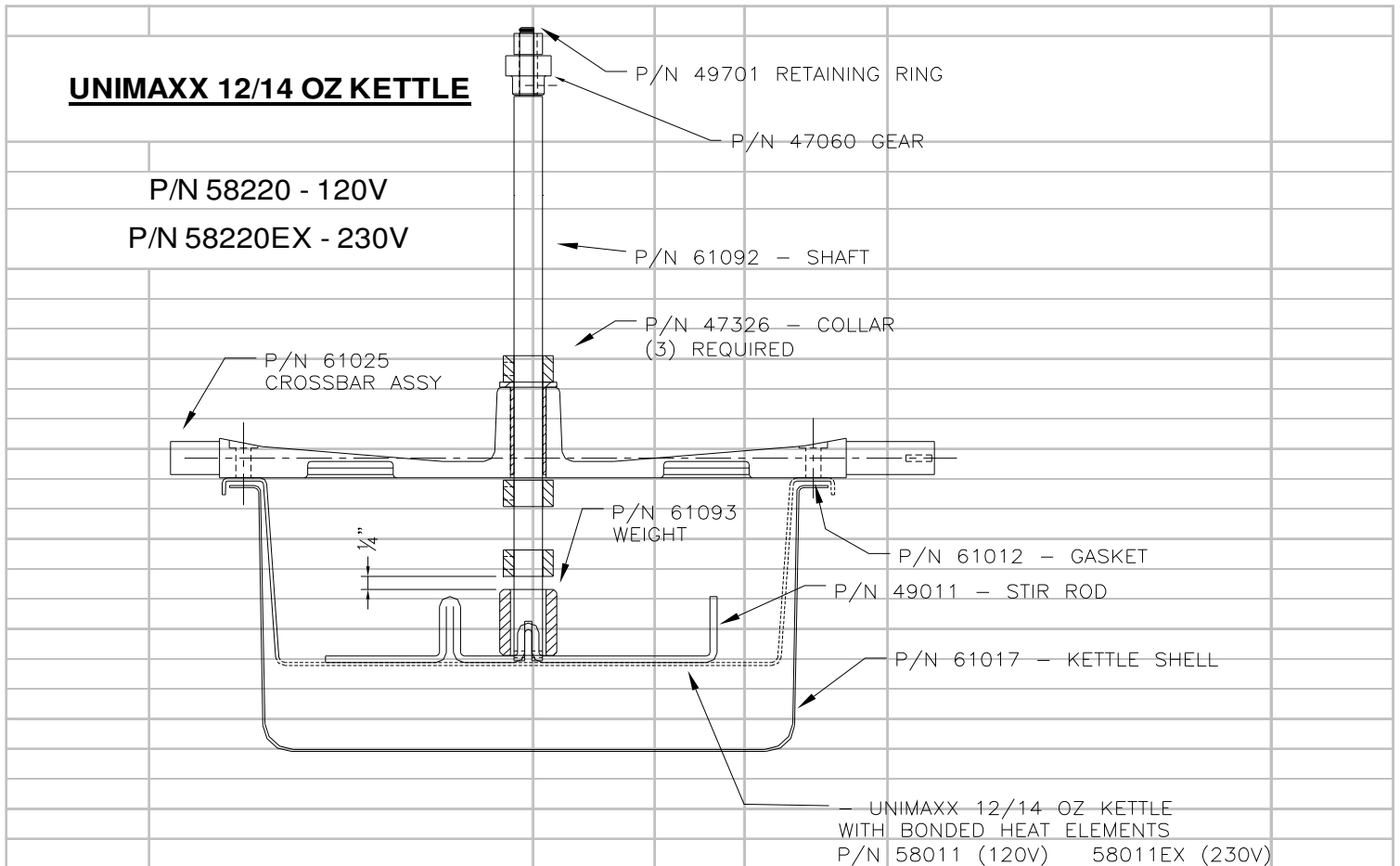


Lid And Agitator Assy.



Lid and Agitator Assembly

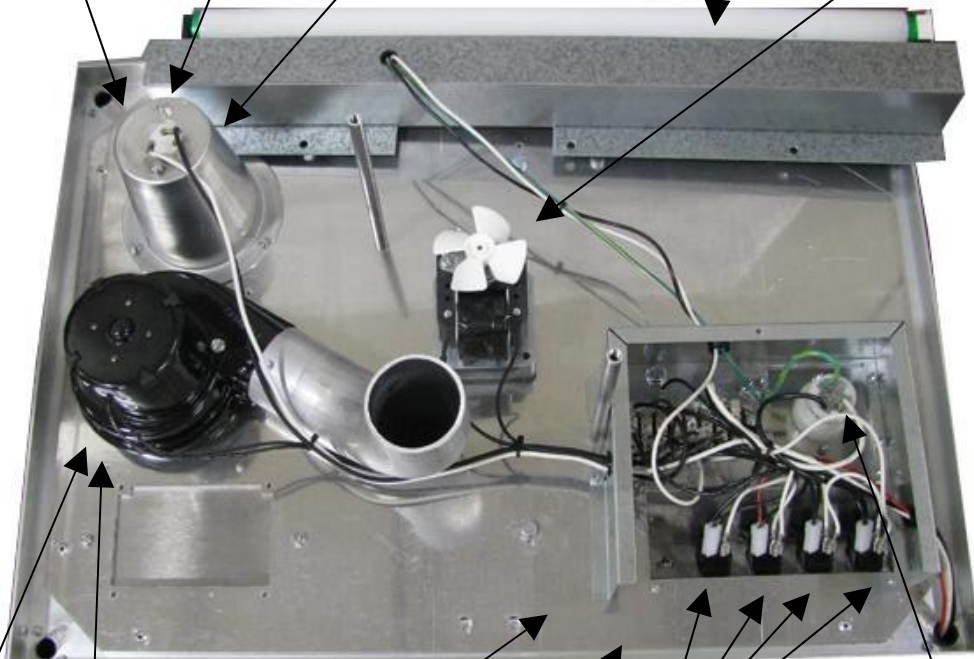
Unimaxx 12/14 OZ Kettle Specification



LID AND AGITATOR PARTS			KETTLE PARTS		
PART NUMBER	DESCRIPTION	QTY	PART NUMBER	DESCRIPTION	QTY
47707	DUMP HANDLE	1	58011	120V KETTLE W/ELEMENTS	1
47110	KNOB FOR DUMP HANDLE	1	58011EX	230V KETTLE W/ELEMENTS	1
47662	DUMP HANDLE SCREW	1	61017	KETTLE SHELL	1
41730	WOODRUFF KEY	1	61012	KETTLE GASKET	1
47119	REAR KETTLE LID	1	47193	THERMOSTAT SHUNT BAR	1
47261	FRONT KETTLE LID	1	76708	482F THERMOSTAT	1
47751	SET SCREW FOR 47326 COLLAR	3	77108	550F THERMOSTAT	1
47326	CLAMP COLLAR	3	89129	NUTS FOR THERMOSTATS	2
61025	CROSSBAR ASSEMBLY	1	61053	KETTLE LEAD ASSEMBLY	1
47097	BUSHING FOR CROSSBAR	1	82107-26	METAL FLEX CONDUIT	1
49011	STIR ROD	1			
61092	AGITATOR SHAFT	1			
47060	SPUR GEAR	1			
47106	NEEDLE BEARING	1			
49701	RETAINING RING FOR BRG	1			
61093	WEIGHT FOR STIR ROD	1			
61068	1/4" X 1 1/4" THUMB SCREW	2			
76079	WASHER FOR THUMB SCREW	2			

Top - Motor Plate Assy.

Lamp Holder p/n 47047	Light Shield p/n 49480	75 Watt Flood Light p/n 41671 (EX uses p/n 49033)	20W Fluorescent Assembly p/n 77002	Kettle Drive Motor, 120V p/n 47038	20 W Fluorescent Bulb 20 Watt p/n 16264
--------------------------	---------------------------	---	--	---------------------------------------	--

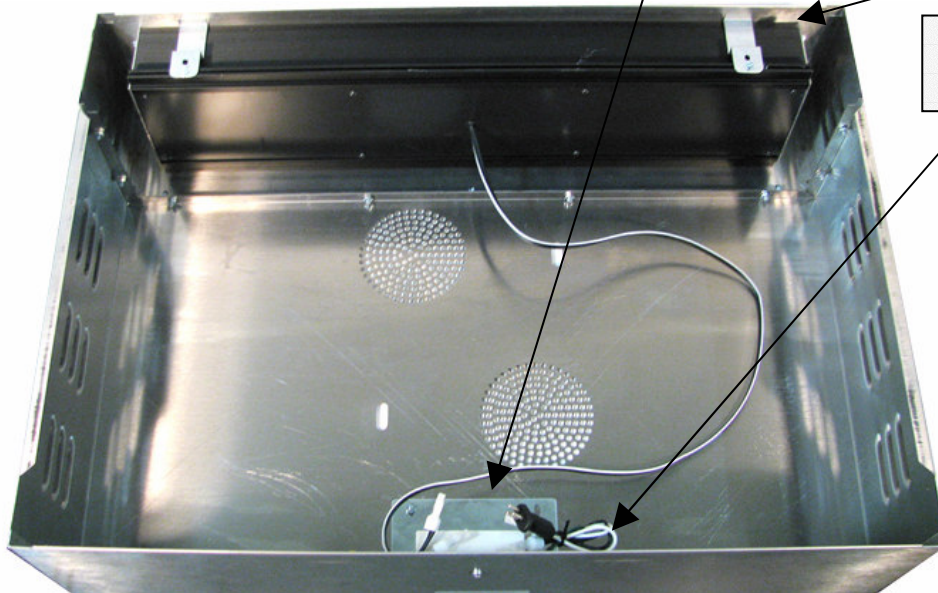


Blower Plug And Cord p/n 47199	Exhaust Blower p/n 47343	Rocker Switch Label, 5 PN p/n 48542	Rocker Switch Box, 5 PN p/n 48543	Switch, Lighted Rocker Gr (4) p/n 42798	Kettle Receptacle 15A Twist Lock p/n 49330
--------------------------------------	-----------------------------	---	---	---	--

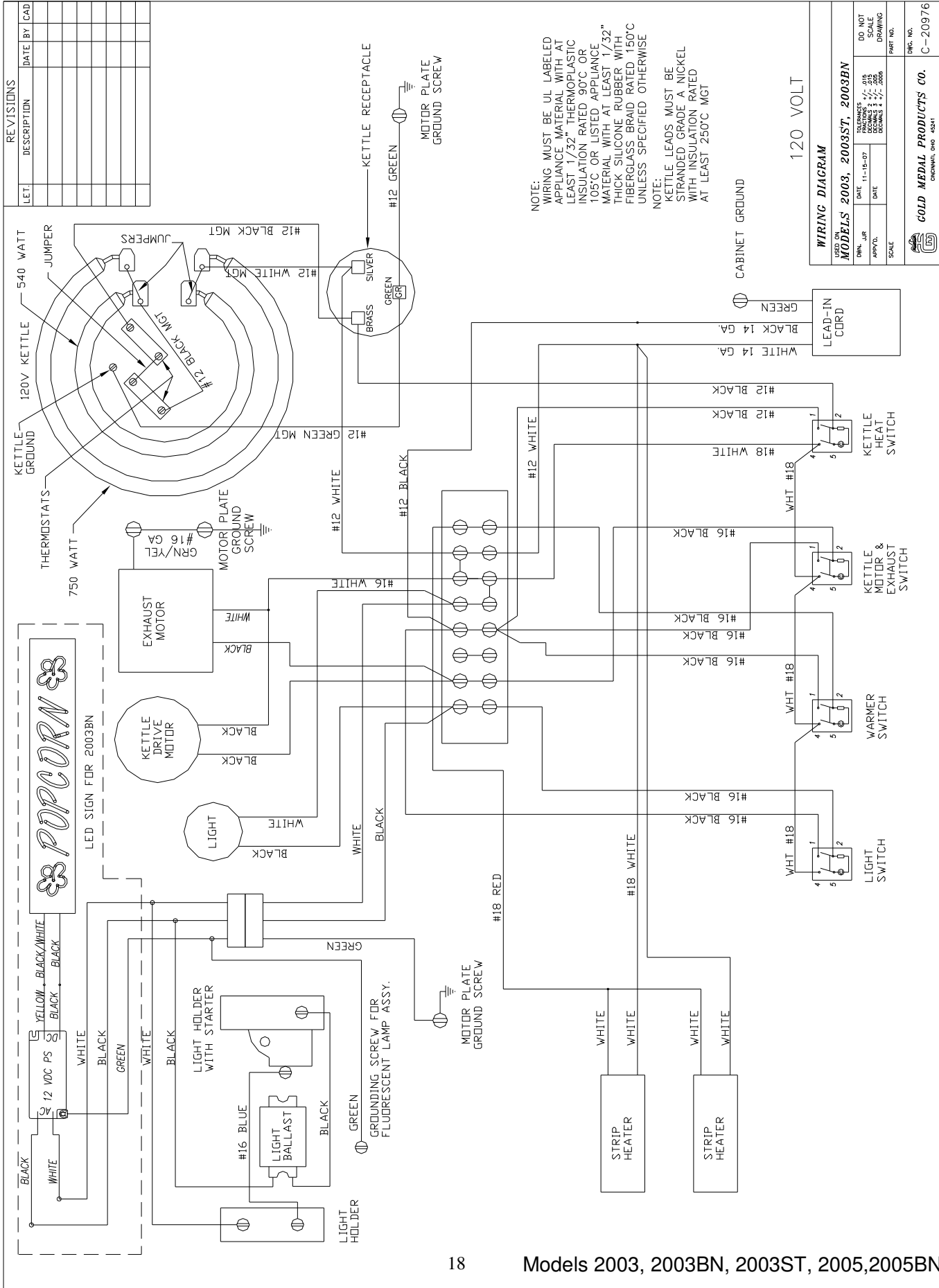
Power Supply,
12VDC
p/n 55231

LED Sign Assy,
24 Inch
p/n 45003

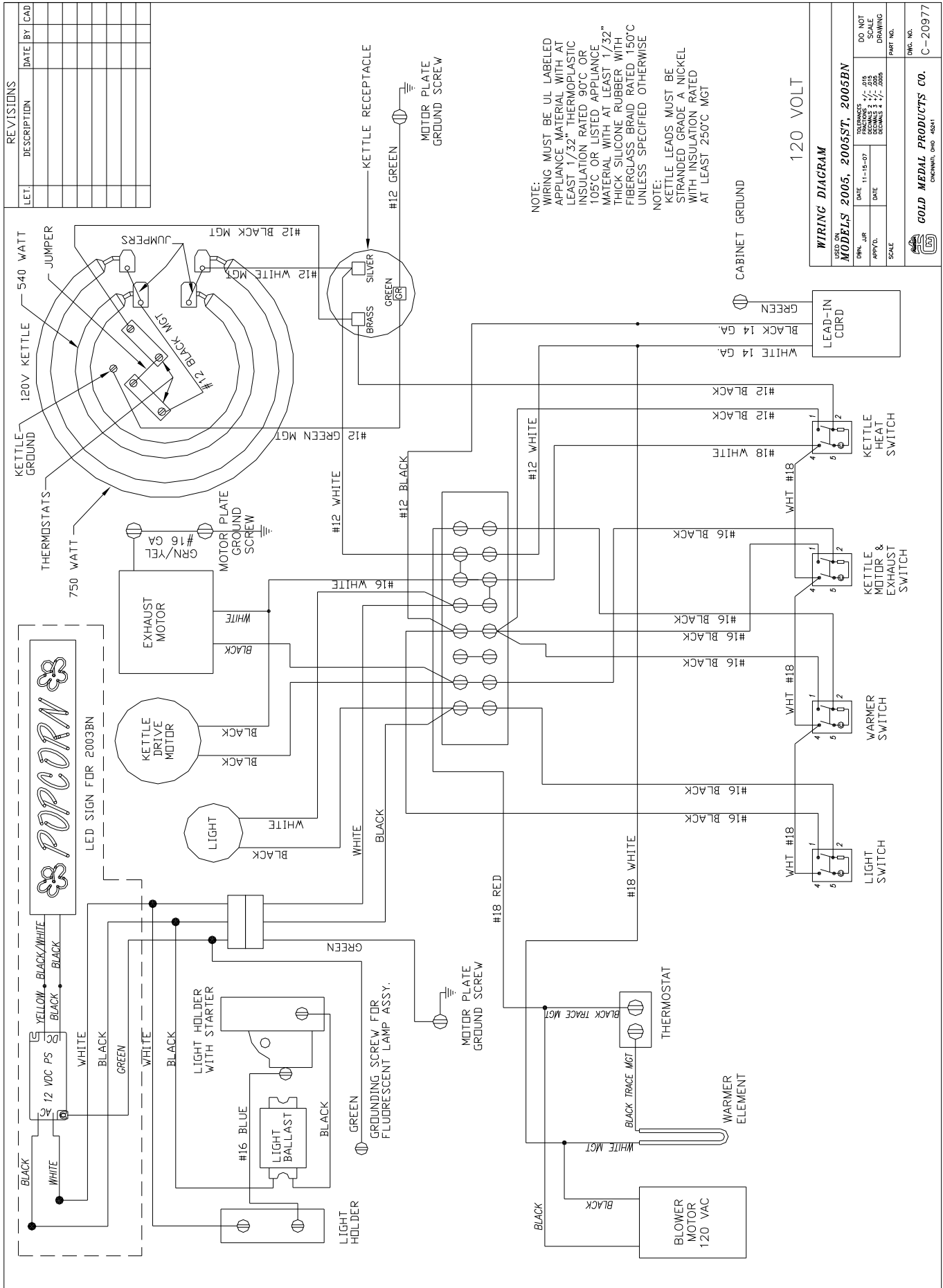
Molded Plug,
Warmer
p/n 47726



Electrical Schematic – 2003



Electrical Schematic - 2005



WARRANTY

WE WARRANT to the original purchaser the Gold Medal equipment sold by us to be free from defects in material or workmanship under normal use and service. Our obligation under this warranty shall be limited to the repair or replacement of any defective part for a period of six (6) months from the date of sale to the Original Purchaser with regard to labor and two (2) years with regard to parts and does not cover damage to the equipment caused by accident, alteration, improper use, voltage, abuse, or failure to follow instructions.

THIS WARRANTY IS IN LIEU OF ALL OTHER WARRANTIES EXPRESSED OR IMPLIED, AND OF ALL OTHER OBLIGATIONS OR LIABILITIES ON OUR PART, INCLUDING THE IMPLIED WARRANTY OF MERCHANTABILITY. THERE ARE NO WARRANTIES WHICH EXTEND BEYOND THE DESCRIPTION ON THE FACE HEREOF. We neither assume, nor authorize any other person to assume for us, any other obligation or liability in connection with the sale of said GOLD MEDAL equipment or any part thereof.

The term "Original Purchaser" as used in this warranty shall be deemed to mean that person, firm, association, or corporation who was billed by the GOLD MEDAL PRODUCTS COMPANY, or their authorized distributor for the equipment.

THIS WARRANTY HAS NO EFFECT AND IS VOID UNLESS THE ORIGINAL PURCHASER FIRST CALLS GOLD MEDAL PRODUCTS COMPANY AT 1-800-543-0862 TO DISCUSS WITH OUR SERVICE REPRESENTATIVE THE EQUIPMENT PROBLEM, AND, IF NECESSARY, FOR INSTRUCTIONS CONCERNING THE REPAIR OR REPLACEMENT OF PARTS.

NOTE: This equipment is manufactured and sold for commercial use only.



GOLD MEDAL PRODUCTS COMPANY

10700 Medallion Drive

Cincinnati, Ohio 45241-4807 USA

www.gmpopcorn.com

Phone: 1-800-543-0862

Fax: 1-800-542-1496

© The text, descriptions, graphics and other material in this publication are the proprietary and exclusive property of Gold Medal Products Company and shall not be used, copied, reproduced, reprinted or published in any fashion, including website display, without its express written consent.